



# CONCLAVE 2020 SERVICE PREVIEW



Service Lodge  
Withlacoochee



# CONCLAVE 2020 SERVICE PREVIEW



Date: April 17-19, 2020

Location: Camp Patten, Lakeland, Ga

Service Lodge: Withlacoochee

Conclave Chairman: Jonathan Lewis

Conclave Advisor: Rick Green





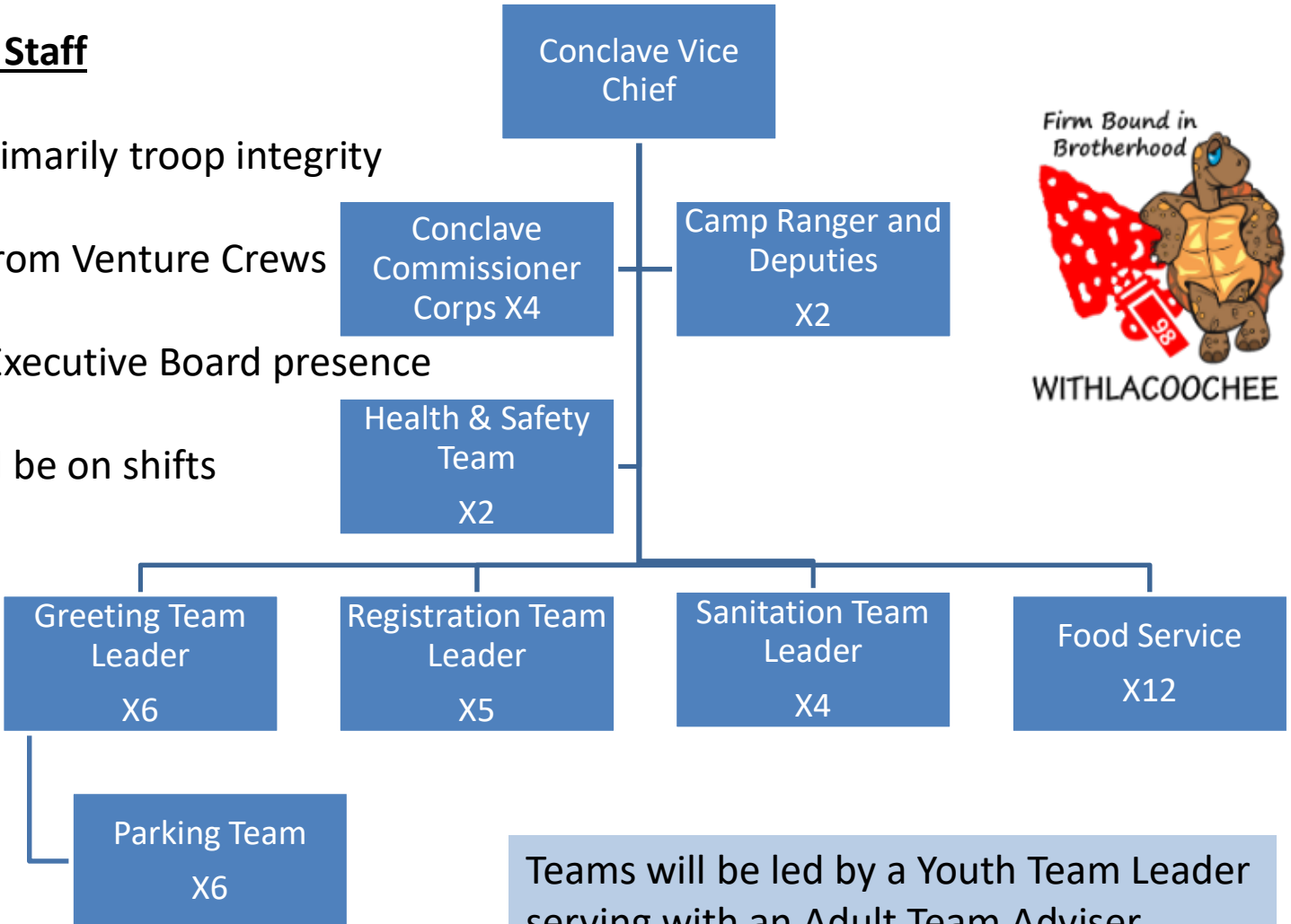
# CONCLAVE 2020 SERVICE PREVIEW



## SERVICE ORGANIZATION

### 41 Total Dedicated Staff

- Teams will be primarily troop integrity
- Augmentation from Venture Crews
- Expect Council Executive Board presence
- Some teams will be on shifts



Teams will be led by a Youth Team Leader serving with an Adult Team Adviser.



# CONCLAVE 2020 SERVICE PREVIEW



## ARRIVAL AND PARKING

ITEM	PLAN	LOCATION
Blind curve	Greeter station immediately before curve to prevent arrivals from entering curve at speed	Blind curve at church and cemetery
Early Arrivals	Drive into camp to lodge campsite, unload, remove vehicle	Campsite then to parking area
Normal Arrival	Enter parking area, unload into lodge designated loading area	Gear will then be transported to campsite
Special Conditions	Vehicles and trailers with lodge gear, drive to camping area, unload, then remove vehicle	Campsite then to parking area
Foot traffic	Foot traffic between camp and parking area	Opening in frontal fence near service entrance



# CONCLAVE 2020 SERVICE PREVIEW



Camp Patten Lakeland, GA





# CONCLAVE 2020 SERVICE PREVIEW



## TRAINING VENUE OPTIONS

No.	Location	Power	Avail Time Frame
1	Picnic Shelter A	Poss w/ extension cord	Sessions 1-5
2	Picnic Shelter B	Poss w/ extension cord	Sessions 1-5
3	Temp 10'x20' Shelter A	Depends on location	Sessions 1-5
4	Temp 10'x20' Shelter B	Depends on location	Sessions 1-5
5	Copeland Center A	Yes, AV available	Sessions 1-4
6	Copeland Center B	Yes, AV available	Sessions 1-4
7	Vulcan Pavilion	Yes	Sessions 2-3
8	Roquemore Pavilion	Yes	Sessions 2-3



# CONCLAVE 2020 SERVICE PREVIEW



## PLANED VENUE LOCATIONS





# CONCLAVE 2020 SERVICE PREVIEW



## Copeland Center







# CONCLAVE 2020 SERVICE PREVIEW



## Picnic Shelter A – In Camping Area





# CONCLAVE 2020 SERVICE PREVIEW



## Picnic Shelter B – Behind Copeland Center





# CONCLAVE 2020 SERVICE PREVIEW



## Vulcan Pavilion





# CONCLAVE 2020 SERVICE PREVIEW



## FOOD SERVICE PLAN

Key Elements
A. Meals to be catered by contract cooking team of local K-12 Private School
B. Friday night Welcoming Fellowship and late night snacks for late arrivals
C. Special Needs foods will be supplied as needed and pre-arranged are covered in contract price.
D. Meals to be served in styrofoam clamshells with utensil packs and beverage cups (included in contract price)
E. Use of clamshells will speed up service line and reduce needed servers.
F. Meals will be served in 2 -2 ½ hour windows
G. Concession stand will have hot dogs, hamburgers, drinks, etc between meals
H. Estimated seating in Vulcan Pavilion using tables and chairs is about 356 at a time. Additional seating of about 45 is nearby in Roquemore Pavilion



# CONCLAVE 2020 SERVICE PREVIEW



## PROPOSED MENU

Meal	Entrée	Beverages
Saturday Breakfast	Cheese Grits Sausage Links Scrambled Eggs	Milk, Coffee, Tea, Water
Saturday Lunch Serving Line	Grilled Hamburgers Chips Fruit/Salad Cookies	Coffee, Tea Bug Juice, Water
Saturday Bag Lunch	Turkey and Cheese Subs, Chips Cookie, Fruit	Water, Bug Juice
Saturday Supper	Lasagna, Salad Green Beans, Garlic Bread Fruit Cobbler	Coffee, Tea, Bug Juice
Sunday Breakfast to go	Breakfast Sandwiches Fruit and snack for later	
Sunday Serving Line	Bacon Pancakes w/ Syrup	Milk, Coffee Tea, Water



# CONCLAVE 2020 SERVICE PREVIEW



## SHOWER FACILITIES

FACILITY	SHOWER HEADS	NOTES
Main Bath House	8	Currently 2 rooms with 4 shower stalls. Modification contract to partition with individual locking doors being quoted to make them unisex
Lakeside Cabins	4	Unisex (individual access) with locking doors. A 3 minute walk from main camping area
Vulcan Pavilion (Lower)	2	Currently individual stalls with curtains, to be partitioned separately. One unisex with access from the back, other will be adult female (access via adult female bathroom with sign on door)
Vulcan Pavilion (Upper)	1	Unisex (Individual access) with locking door.
Total Shower Heads	15	



# CONCLAVE 2020 SERVICE PREVIEW



## BATHROOM FACILITIES

FACILITY	COMMODOES	NOTES
Main Bath House	7	2 Bathrooms, one with 3 partitioned commodes, one with 4 partitioned commodes.
Lakeside Cabins	4	Individual access with locking doors. A 3 minute walk from main camping area
Vulcan Pavilion (Lower)	3	2 rooms, one with 2 partitioned commodes, the other with 1 partitioned commode.
Vulcan Pavilion (Upper)	1	Individual access with locking door.
Copeland Center	2	Individual access with locking door.
Total	17	
Porta Potty Rental	5	Dispersed
Total Needed for 660 Participants	22	



# CONCLAVE 2020 SERVICE PREVIEW



## HEALTH AND SAFETY

Medical staff of 1 to 2 on site. Closest Hospital is 4 miles (8 minutes) away in Lakeland. Local hospital is branch of SGMC (South Georgia Medical Center) and has 24 hour emergency room and is an acute care facility.

(Note: Those arriving from the North down I-75 and taking exit 39 (SH37) will come into Lakeland on US129 and go past this hospital.)

If needed major regional medical center, SGMC (South Georgia Medical Center) is 19 miles (26 minutes) away in Valdosta.